

## SHIMANO DEORE Front Disc Brake

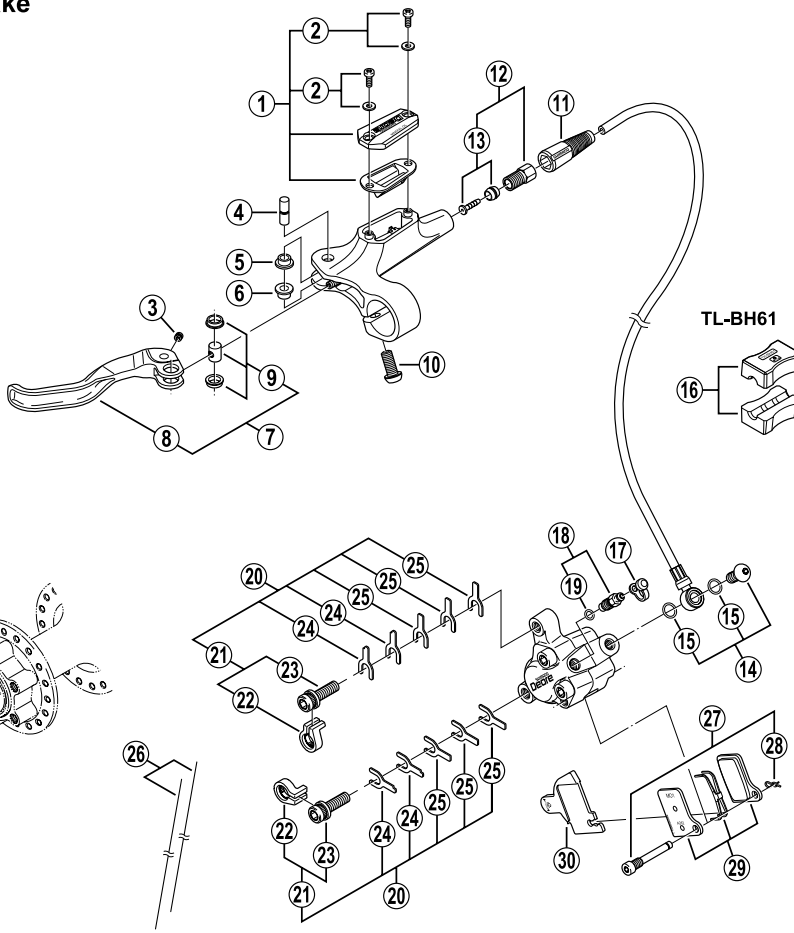
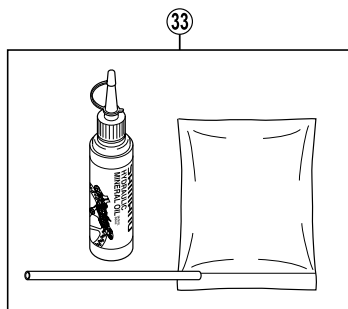
**BR-M555** Brake Caliper

**BL-M556** Brake Lever

**SM-RT61** Disc Rotor

**SM-BH62** Brake Hose

**SM-DB-OIL** Mineral Oil



Q'TY	ITEM NO.	SHIMANO CODE NO.	DESCRIPTION
	1	Y-8S7 98010	L.H. Lid Unit
	2	Y-8SZ 98020	Lid Fixing Screw (M3 x 8) & Washer
	3	Y-8SZ 07000	Lever Axle Fixing Bolt
	4	Y-8SZ 06000	Lever Axle
	5	Y-8SZ 03000	Lever Axle Bush A
	6	Y-8SZ 04000	Lever Axle Bush B
	7	Y-8S7 98030	Lever Unit
	8	Y-8SZ 05200	Lever Member
	9	Y-8S4 98060	Reach Adjusting Boss & Bush
	10	Y-8SB 10000	Clamp Bolt (M6 x 14.8)
	11	Y-8H2 03000	Cover
	12	Y-8H2 98010	Connecting Bolt Unit
	13	Y-8H2 98020	Olive & Connecting Insert
	14	Y-8H0 98010	Banjo Bolt & O-Ring
	15	Y-8SY 28000	O-Ring
	16	Y-8H1 98030	TL-BH61 Special Tool (2 pcs.)
	17	Y-8B2 14000	Bleed Nipple Cap
	18	Y-8B5 98050	Bleed Nipple & Seal Ring
	19	Y-8B5 11001	O-Ring for Bleed Nipple
	20	Y-8B2 98130	Caliper Fixing Bolt Unit
	21	Y-8C4 98010	Caliper Fixing Bolt & Stop Ring
	22	Y-8C5 11000	Stop Ring
	23	Y-8C5 09000	Caliper Fixing Bolt (M6 x 20)
	24	Y-8CL 13000	Spacer (0.5 mm)
	25	Y-8CL 14000	Adjusting Washer (0.2 mm)
	26	Y-8B2 98010	Wire (2 pcs.)
	27	Y-8B5 98030	Pad Axle & Snap Ring
	28	Y-8B2 12000	Snap Ring
	29	Y-8B5 98010	Metal Pad (M01) & Spring
		Y-8B5 98040	Resin Pad (M02) & Spring
	30	Y-8B5 09000	Pad Spacer
	31	Y-8HY 98010	Disc Rotor Unit (φ 160 mm)
	32	Y-818 98030	Disc Rotor Fixing Bolt & Plate
	33	Y-839 98010	Mineral Oil Bleed Kit (50 ml)