

King Cycle Group

Perdido Headset Standard

Rev A 8/30/01

The Perdido headset and associated standard were developed by King Cycle Group to provide bike manufacturers a reliable and uncomplicated recessed headset style. The Perdido Standard was designed as a complete system. Frame manufacturing, frame preparation, headset installation and service have all been considered and provided for.

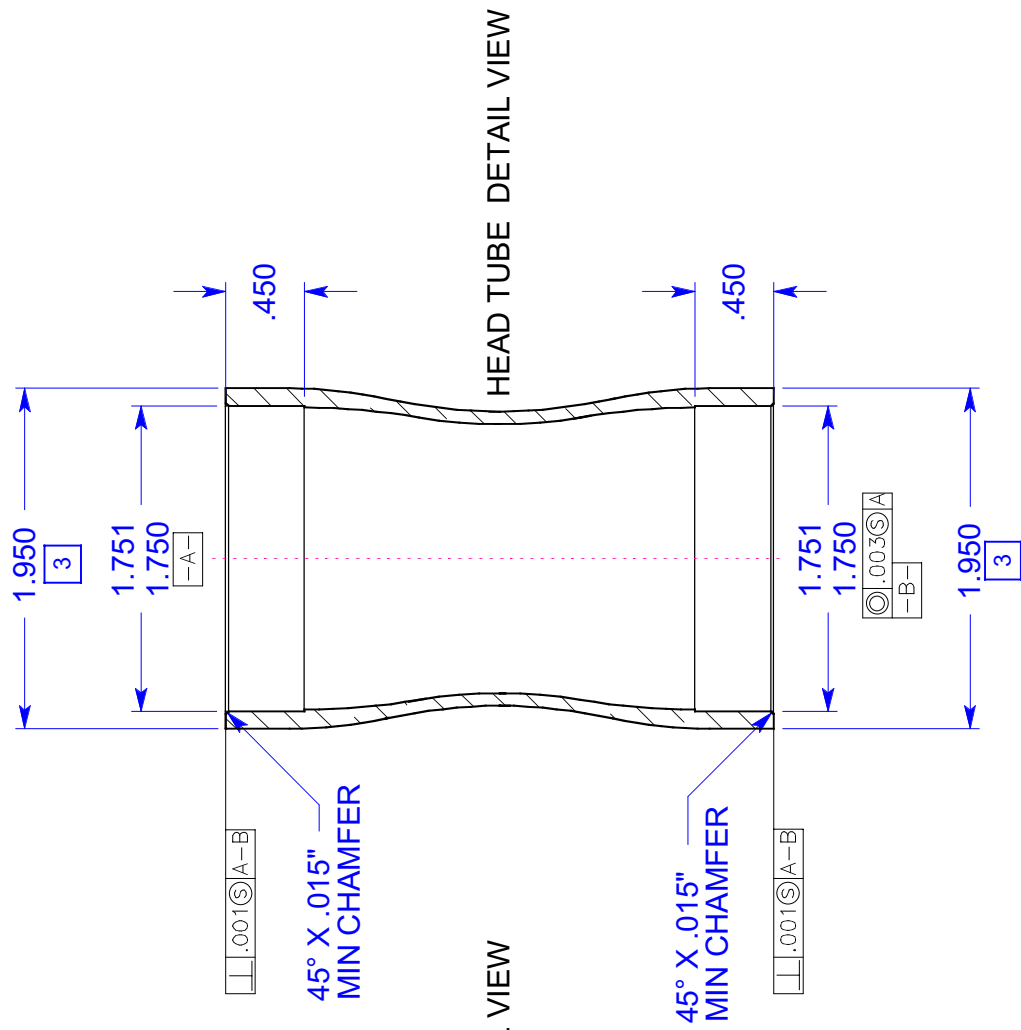
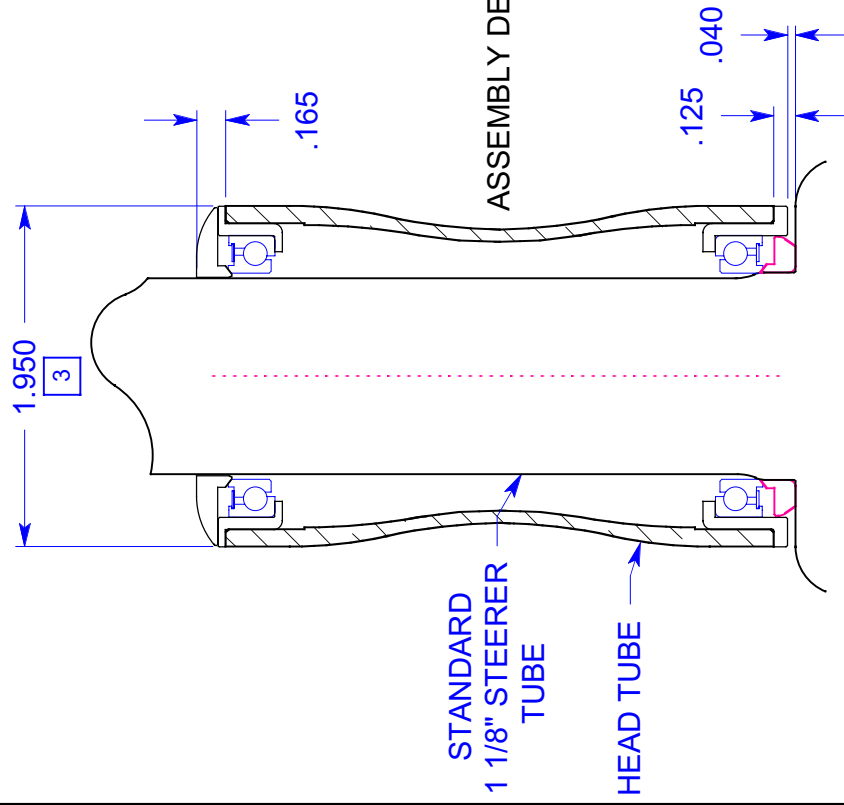
Perdido advantages:

- 1. Documented Open Standard.
King Cycle Group will maintain standard documentation describing frame details and dimensions. This documentation is available free of charge to anyone and will be posted on our website. No licensing is required; anyone can make a frame or headset to this standard.*
- 2. Compatibility with Existing Hardware.
Use standard 1 1/8" steerer tubes and crown races / base plates. Special bearings are not needed.*
- 3. Shop Tooling.
King Cycle Group will manufacture facing, reaming and press tools to allow bike shops the ability to properly install and service Perdido headsets.*
- 4. Ease of Manufacture.
Perdido was designed to use commonly available shell reamers (Ø1.750/1.751") and a simple bore to reduce manufacturing cost and complexity, no shaped tools are required. Frame dimensions are easy to measure with simple tools.*
- 5. Superior Structural Strength and Durability.
Headset bearings are captured and secured in the headtube by a press fit. No bearings will just "fall out" of the frame. This protects the frame from damages caused by a loose integrated headset. Positive bearing location ensures precise headset adjustment, longer headset life and reduced damage to other connected parts.*

REVISIONS

REV.	DATE	CHANGES
A	8/10/01	RELEASE

PROPRIETARY RIGHTS OF KING CYCLE GROUP ARE INVOLVED IN THE INFORMATION AND SUBSEQUENT USE OF THIS MATERIAL. IT IS SUBMITTED IN CONFIDENCE FOR A SPECIFIC PURPOSE AND IS NOT TO BE REPRODUCED OR TRANSMITTED IN ANY FORM OR BY ANY MEANS, BE USED OTHER THAN FOR THE EXPRESS PURPOSE FOR WHICH IT WAS DELIVERED, OR DISCLOSED TO ANY OTHERS WITHOUT WRITTEN PERMISSION FROM KING CYCLE GROUP IS FORBIDDEN.



NOTES:

- THIS HEAD TUBE DIMENSION IS FOR COSMETIC FIT WITH INSTALLED CUP.
- ALL DIMENSIONS ARE POST WELD, POST HEAT TREAT, POST PAINT/COATING
- ALL DIMENSIONS AND TOLERANCES SHOWN HERE ARE FOR PROPER HEADSET FIT AND FUNCTION ONLY. THESE DIMENSIONS AND TOLERANCES DO NOT TAKE THE PLACE OF PROPER FRAME DESIGN.

CONTACT: MOROURKE@CHRISKING.COM

UNLESS OTHERWISE SPECIFIED:

DIMENSIONS IN INCHES
 .X±.10 .XX±.010 .XXX±.005

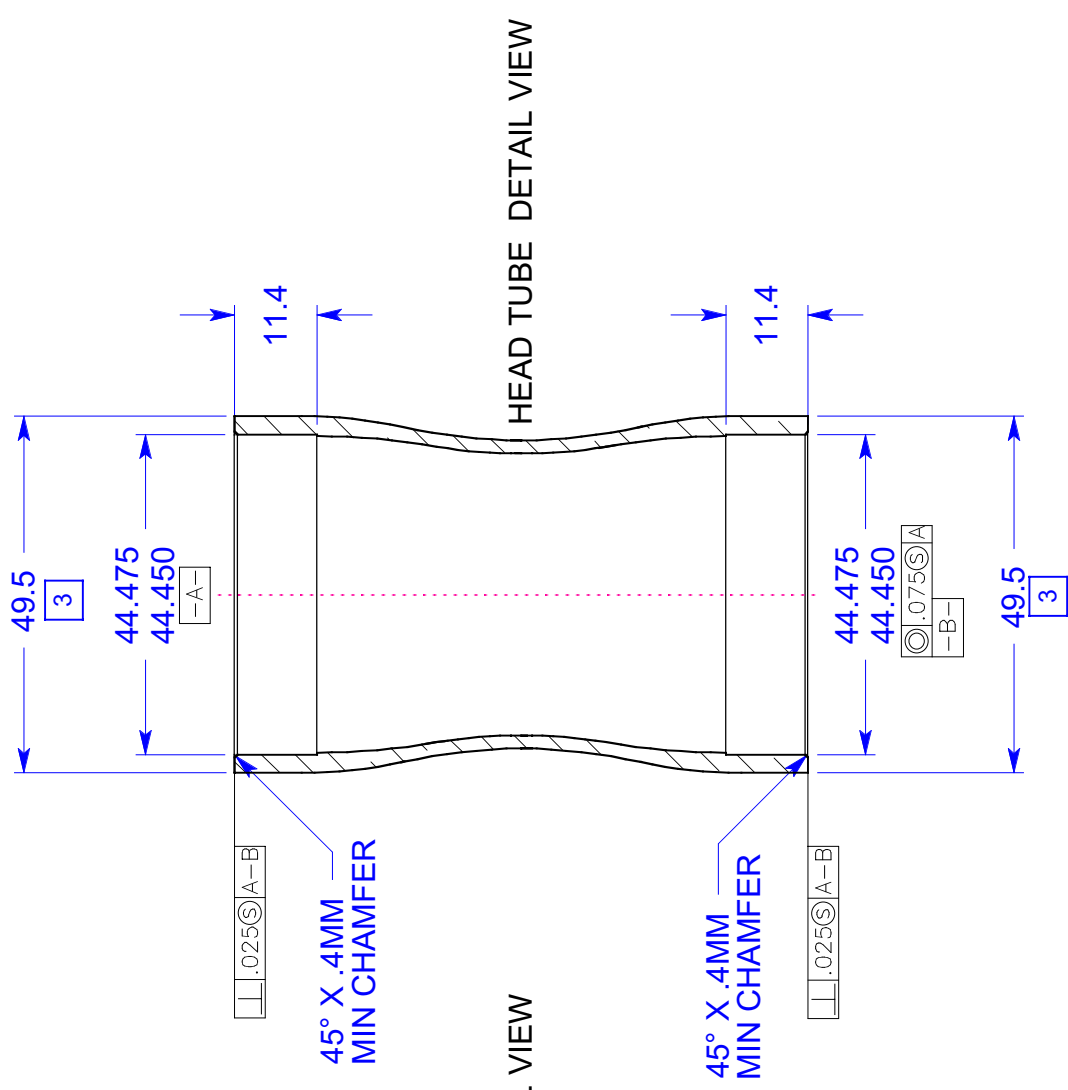
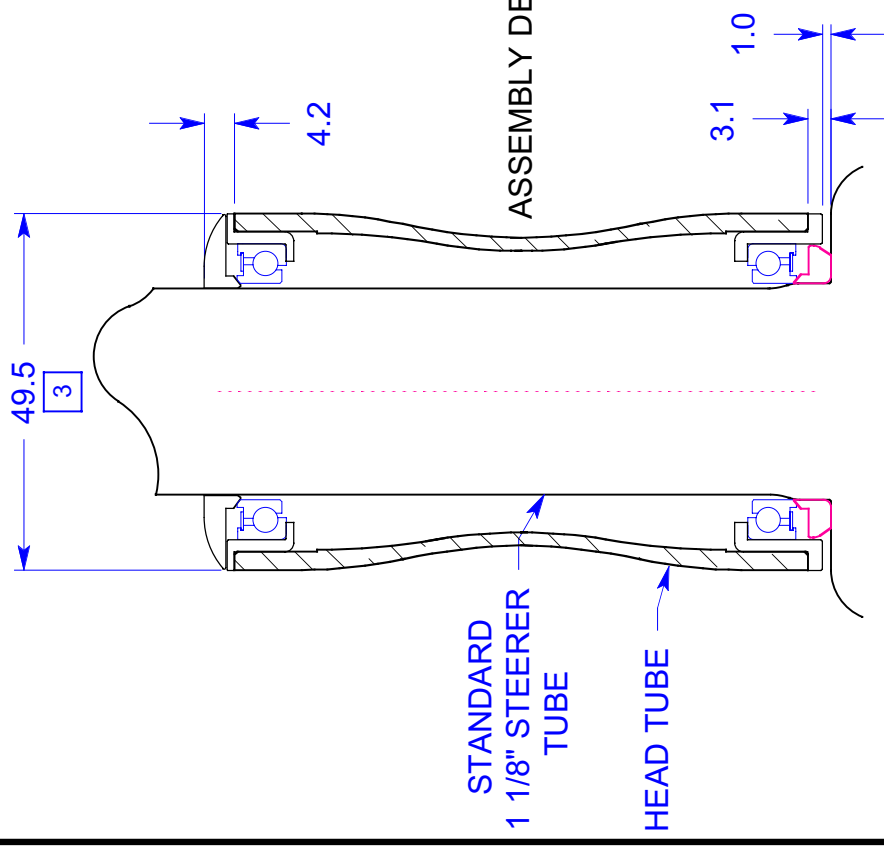
KING CYCLE GROUP

DRAWN		NAME	
MOROURKE	8/10/01	PERDIDO HEADSET STANDARD	
CHECKED	DATE	PART NUMBER	REV
APPROVED	DATE	INCH	A
RELEASED	DATE	SIZE A	SHEET 1 OF 1

SCALE 1:1

PROPRIETARY RIGHTS OF KING CYCLE GROUP ARE INVOLVED IN THE INFORMATION AND MATERIALS CONTAINED HEREIN. SUCH INFORMATION IS TO BE USED FOR THE EXCLUSIVE PURPOSE AND THE RECIPIENT BY EXPRESS PERMISSION FROM KING CYCLE GROUP. IT SHALL NOT BE USED OTHER THAN FOR THE EXPRESS PURPOSE FOR WHICH IT WAS DELIVERED. DISCLOSURE TO ANY OTHERS WITHOUT WRITTEN PERMISSION FROM KING CYCLE GROUP IS FORBIDDEN.

REVIEWS			
REV.	DATE	CHANGES	RELEASE
A	8/10/01		



NOTES:

3. THIS HEAD TUBE DIMENSION IS FOR COSMETIC FIT WITH INSTALLED CUP.
2. ALL DIMENSIONS ARE POST WELD, POST HEAT TREAT, POST PAINT/COATING
1. ALL DIMENSIONS AND TOLERANCES SHOWN HERE ARE FOR PROPER HEADSET FIT AND FUNCTION ONLY. THESE DIMENSIONS AND TOLERANCES DO NOT TAKE THE PLACE OF PROPER FRAME DESIGN.

CONTACT: MOROURKE@CHRISKING.COM

UNLESS OTHERWISE SPECIFIED:

DIMENSIONS IN MILLIMETERS
 .X±.10 .XX±.010 .XXX±.005

KING CYCLE GROUP

DRAWN	DATE	NAME	PERDIDO HEADSET STANDARD
M. OROURKE	8/10/01		
CHECKED	DATE	PART NUMBER	METRIC
APPROVED	DATE	SIZE	SCALE 1:1
		A	
RELEASED	DATE	SHEET	1 OF 1